

DPX 4 User Guide



Preface

Copyright

© Copyright 2005 Esko-Graphics A/S
All rights reserved.

DPX 4 User Guide v. 1.2, August 2005 (for DotManager v. 1.3)

This manual, as well as the software described in it, is provided under licence and may only be used or copied in accordance with the terms of that licence. The information in this manual is subject to change, without notice, and should not be construed as a commitment by Esko-Graphics A/S. Esko-Graphics A/S assumes no responsibility or liability for any errors or inaccuracies that appear in this manual.

All rights reserved. No part of this manual may be reproduced or transmitted in any form, or by any means, without the prior written permission of Esko-Graphics A/S.

Windows is registered trademark of Microsoft Corporation.

All other brand or product names are trademarks or registered trademarks of their respective companies or organisations.

Esko-Graphics contact information

Esko-Graphics A/S
Lægårdsvej 9
DK-8520 Lystrup
DENMARK
Tel: +45 87 43 43 43
Fax: +45 87 43 44 45

Esko-Graphics A/S
Industriparken 35
DK-2750 Ballerup
DENMARK
Tel: +45 44 73 66 66
Fax: +45 44 73 68 68

Web: www.esko-graphics.com

Table of Contents

Preface

Chapter 1 – Using this guide

Navigating around this guide	1.1
Browser-based Help	1.1
Contents, Index and Search	1.1
Printing a page	1.2
PDF Help viewed in Acrobat Reader	1.2
Bookmarks	1.3
Using hot links	1.3
Printing from Acrobat Reader	1.3
Warnings and notes	1.4
Warnings	1.4
Notes	1.4

Chapter 2 – Introduction

General	2.1
Advanced Internal Drum Design	2.1
Media Load System	2.1
Knife and Punch System	2.2
The Laser and Spinner System	2.2
Optical System	2.2
Integrated Processor and Dryer	2.2
Easy Maintenance and Monitoring of the Processor	2.3
Workflow	2.3

Chapter 3 – Safety

General	3.1
---------------	-----

Laser	3.1
-------------	-----

Chapter 4 – Media Handling

Media Load System	4.1
Inserting and Mounting Media	4.1
Removing the Media Roll	4.1
Mounting a New Media Roll	4.3

Chapter 5 – Working with DotManager

General	5.1
Menus	5.1
File menu	5.2
View menu	5.2
Tools menu	5.2
Help menu	5.2
Buttons	5.2
Tabs	5.3
Platesetter Tab	5.3
Media Tab	5.4
Service Tab	5.5
General	5.5
Pump issues	5.5
Add Volume	5.5
I/O Test button	5.5
Calibration of Replenishment Pumps	5.6
Preferences Tab	5.6
Online Processor	5.7
Anti Oxidant	5.7
Standby (Energy Save mode) Processor	5.7
Standby (Energy Save mode) Anti Oxidant	5.7
Setup Tab	5.7
Firmware	5.8
DotWatch	5.8
Product LicenseKeys	5.8
RipManagement Tab	5.8
License Tab	5.9

Spool Tab	5.10
Imagesetter Tab	5.10

Chapter 6 – Maintenance

General	6.1
Draining the Processor Unit	6.1
Step 1: Draining the waste tank	6.1
Step 2: Emptying the processor	6.3
Cleaning the Processor Unit	6.4
Filling the Processor Unit	6.5

Chapter 7 – Calibration

Why Is Calibration Necessary?	7.1
-------------------------------------	-----

Chapter 8 – Technical Specifications

Index

Chapter 1 – Using this guide

This section includes the following topics:

- [Navigating around this guide](#)
 - [Browser-based Help](#)
 - [PDF Help viewed in Acrobat Reader](#)
- [Warnings and notes](#)

Navigating around this guide

The DPX User Guide is available as:

- [PDF Help viewed in Acrobat Reader](#)
- [Browser-based Help](#), which you can access, when working with DotManager.

Browser-based Help

You open this guide from the DotManager's Help menu or by pressing F1. Required is Internet Explorer 4.0 or later with JavaScript enabled. When viewing this browser-based user guide you can move around the contents using the help's navigation buttons, for example:



View contents



Open / close Contents folder



View Index



Open Search function



Go forward one page



Go back one page



Show in contents



Send mail



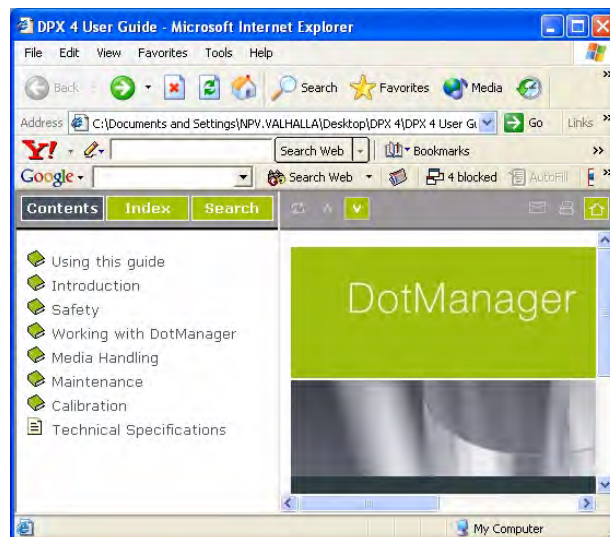
Print this page



Open Esko-Graphics home page

Contents, Index and Search

Click the **Contents** button to view the contents entries. Click on an entry to take you to the relevant section.

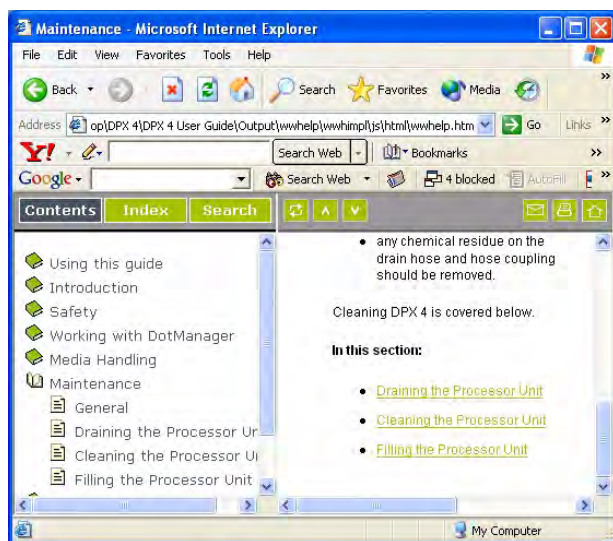


Click the **Contents folder icons** to view and access sub-entries.

Click the **underlined links** to navigate to other sections.

Click the **Index** button to view and navigate via the index entries.

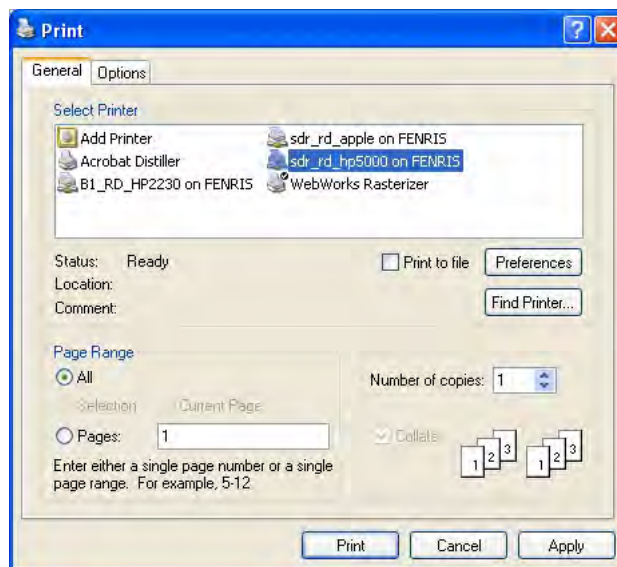
Click the **Search** button to view and use the search function.



Printing a page

To print a page:






1. Click the **Print** button to print the page you are viewing. This opens a dialog similar to the following:






2. Select the required printer from the **Select printer** section.
3. Click on **Print** to print this page.

PDF Help viewed in Acrobat Reader

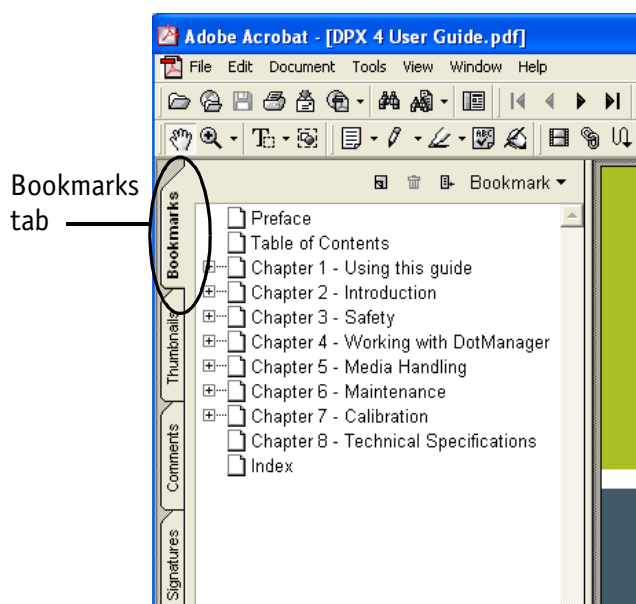
If you are viewing this guide using Acrobat Reader you can move around the guide using Acrobat's navigation buttons, for example:

-  Go to the first page of the guide
-  Go back one page
-  Go forward one page
-  Go to the last page of the guide
-  Go back to previous view

-  Go forward to next view
-  Fit whole page in window
-  Show/hide bookmarks

Bookmarks

You can use Acrobat's Bookmarks window to navigate to the required chapter/section of this manual. If the bookmarks are not visible, click on the **Bookmarks** tab (see below) to display them:



Click on a link to move to the relevant chapter. Click on a **+....** link to view the sub-sections within a chapter.

Using hot links

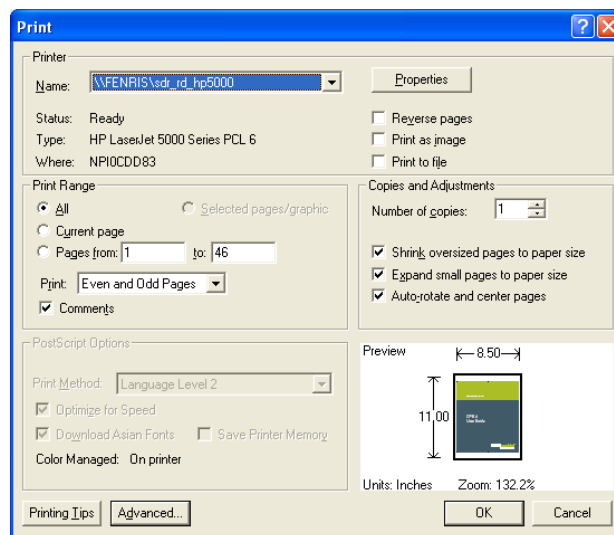
If you are viewing this guide in Acrobat Reader you can use 'hot links' to move quickly to the section you want (when you place the mouse cursor over a hot link it turns into a hand icon). There are three types of hot link:

- On the Contents page: click on the entry to take you to the relevant section.
- Cross references: you will find these throughout the manual, for example, refer to "*Printing from Acrobat Reader*" on page 1.3 for instructions. Click on the section reference to take you to the relevant page.
- On the Index page: click on the index entry to take you to the relevant page.

Printing from Acrobat Reader

To print this guide:

1. In Acrobat Reader select **Print...** from the **File** menu to display a dialog similar to the following:



2. Select the required printer from the **Name** pull-down menu.
3. Click on the **Properties** button and select the **Portrait** orientation on the **Layout** tab.
4. Click on **OK** to return to the Print dialog.
5. Set the other options, such as the page range, then click on **OK** to print this guide (or the specified pages).

Warnings and notes

Warnings

The warnings in this manual are mainly intended to protect you from injury and/or the DPX 4 engine and your plates from damage. Please read all warnings carefully and follow any instructions. Warnings are shown like this:

WARNING: When working with the DPX 4 system you must protect yourself from injury and protect the DPX 4 engine from damage.

Notes

The notes in this manual give additional information on using the DPX 4 system. They are shown like this:

Note The instructions in this manual are for the DPX 4 system.

Chapter 2 – Introduction

General

In this section:

- Advanced Internal Drum Design
- Media Load System
- Knife and Punch System
- The Laser and Spinner System
- Optical System
- Integrated Processor and Dryer
- Easy Maintenance and Monitoring of the Processor
- Workflow

The DPX 4 is a 4-up, highly productive, fully daylight operated automatic Computer to Polyester Plate System, producing imaged, punched, dried and cut-to-size press ready plates. The DPX 4 has very small foot print of only 1370 x 1060 mm / 53.9" x 41.73" thus taking up very little space.



Advanced Internal Drum Design



The drum in the DPX 4 is high-precision manufactured using extruded aluminum to achieve extremely high precision and accuracy.

Media Load System



DPX 4 has a twin-compartment media load system and features a very simple load procedure. An auto-centering system ensures precise centering of new media on the shaft every time a new roll is loaded. During operation the media is advanced automatically, positioned in the drum and held in place by a unique vacuum system during exposure. The use of two compartments (one optional) allows different sized plates for various presses.

View how the media is loaded, exposed and cut:

[View Demo](#)

Knife and Punch System

The material is punched with the built in punch system, exposed and cut to size. This gives a precise and even registration from plate to plate and ensures minimum mounting time and easy registering of the plate on the press. The DPX 4 comes with a Bacher 425 mm punch as standard and can be field upgraded with a Bacher 220 mm as well as Komori 550 mm custom punch.

The Laser and Spinner System

The construction of the laser system is crucial for output quality. Esko-Graphics use fiber optic cables to transmit the dot directly into the optics and high-speed spinner.

Optical System

The optical system covers resolutions from 1000 to 3000 dpi in various steps ensuring the correct spot size and laser intensity for the selected resolution as well as automatic focus which ensures the optimized spot on the plate producing high quality four color print.

Integrated Processor and Dryer

The built-in processor is a twin-bath processor, i.e. one temperature controlled activator tank and a fixer tank. Both tanks have sensors for controlling the chemistry level and active replenishment to ensure the correct level of new chemistry in the tanks and to achieve precise activation of the polyester plate.

A 30-liter waste container collects excess chemistry and indicates to the user when full. A drain pump allows easy emptying of the container by the user without interference with the chemicals.

Easy Maintenance and Monitoring of the Processor



The processor is mounted on wheels and a guide allowing it to be rolled out for easy maintenance or refill of chemistry. A processor program for control and monitoring is integrated in the DotManager program running on the RIP PC which gives the operator real time indication of the processor status.

Workflow

The DPX 4 is controlled by a Win2000 or WinXP-based RIP platform. The DotManager program with user friendly features controls the media, processor and RipMate options and features. The interface between the DPX 4 and the RIP PC operates through a USB-2.0 port.

Chapter 3 – Safety

General

Although every precaution has been made to produce a safe product, we strongly recommend that the below points be observed.

- The equipment must be properly grounded when connected to electrical outlets
- Turn off power:
 - before connecting or disconnecting cables, and
 - before carrying out service or adjustment operations
- Use non-reflective tools while working in the drum area with the laser turned on
- Do not remove covers or shielding
- Do not install/use the equipment close to inflammable gases and vapours
- Do not in any way make unauthorized modifications of the equipment
- Wear protective gloves when handling chemistry and avoid spilling the fluids
- Always check that the actual media width in Media Management corresponds to the actual media being used
- The spinner in the platesetter cannot be started in an ambient temperature of less than 15 degrees Celcius.

See also:

- Laser.

Laser

DPX 4 is equipped with a Class 3B laser which under normal working conditions is totally shielded by the cabinet. When the panels are removed, an interlock system automatically switches off the laser and optics unit, thus ensuring no risk of radiation.



To override the interlock system, a "defeater" female connector is fitted to the male connector located behind the left-hand side door. Only authorized service personnel may override the interlock system on the cover.

Chapter 4 – Media Handling

Media Load System

DPX 4 has a twin-compartment media load system and features a very simple load procedure. An auto-centering system ensures precise centering of new media on the shaft every time a new roll is loaded.

During operation the media is advanced automatically, positioned in the drum and held in place by a unique vacuum system during exposure.

The use of two compartments (one optional) allows different sized plates for various presses.

Note The media transport is designed for excess material to leave the machine with the last exposure. However, this may sometimes cause a media jam.

However, machines produced in autumn 2004 are designed to roll media back into the media compartment from which it may be removed by the operator.

In this section:

- Inserting and Mounting Media

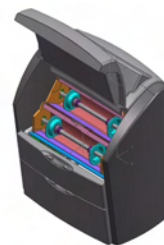
Inserting and Mounting Media

DPX 4 is equipped with two media compartments - upper and lower - (see Media compartments). Follow the instructions below to ensure that the media is properly loaded.

The media rolls are both accessed conveniently from the front of DPX 4.

Removing the Media Roll

1. Make sure the media is unloaded (**Unload** button on DotManager's Platesetter Tab).

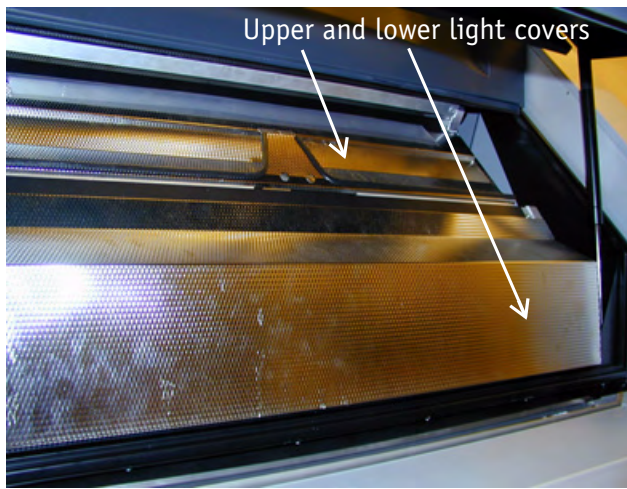


Twin-compartment



Built-in processor

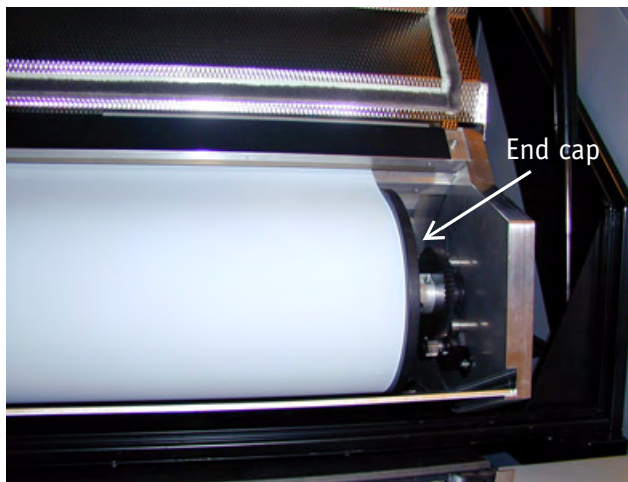
2. Open the front cover.



3. Lift the upper or (in this case) lower light protection cover.



5. Place the media roll vertically on the floor and loosen the end cap by pulling the lock handle upward.



4. Gently lift the media roll out of its compartment by the end caps.



6. Set foot on the left-hand end cap and lift the right-hand end cap off the media shaft.
7. Lift the media roll off the shaft.

Mounting a New Media Roll



Note Please make sure that any tape and/or remnants from tape on the new media roll is removed completely prior to inserting the roll into its compartment, as it may otherwise damage the inside of the drum in time.

1. Slide the media onto the shaft making sure it fits tightly against the left-hand end cap.
2. Push the right-hand end cap onto the shaft and note that the media roll is centered automatically on the shaft.
3. Push the lock handle forward.
4. Place the shaft with the media roll in the compartment.
5. Carefully remove the fastening tape from the media and advance the roll towards the input edge.
6. Press the **Preload** button to advance the media.
7. Close the light protection cover.

Chapter 5 – Working with DotManager

General

DotManager for DPX 4 combines the functionality of the former RipManager (minus RipWatch) Terminal program, and Processor service programs into one application. RipWatch is replaced by *DotWatch*.

DotManager runs as a separate application, and communicates with the DPX 4 platesetter through a USB interface, which replaces the former SCSI plus RS232 interfaces used for communicating with the DPX and DotMate systems.

The DotManager interacts with the Global Graphics-based RipMate RIP by providing license management for the Esko-Graphics specific options (Extended Workflow, ProofMate and CIPMate), starting/stopping the RIP, and providing device services.

DotManager opens with the splash screen below:



which remains for a few seconds, then switches to the main screen below:



In this section:

- Menus
- Buttons
- Tabs

Menus

DPX 4 does not have a panel of buttons to press, so the user communicates with the machine through the DotManager program below.

DotManager is installed with RipMate and is located and started from the RipMate (Ripxxx) program group.

DotManager has four menu items described below:

- File menu
- View menu

- Tools menu
- Help menu

File menu



Save Changes: Click to save any changes made to the current setup.

Exit: Click to exit the DotManager application.

View menu



Platesetter: Click to view Platesetter tab

Setup: Click to view Setup tab

Rip Management: Click to view Rip Management tab.

Tools menu



Start RipMate: Click to start the RipMate application.

Stop Ripmate: Click to stop the RipMate application.

Start Hyperterminal: Click to start the hyperterminal communication application used for debugging purposes.

Help menu

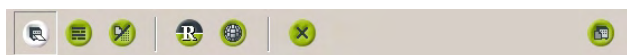



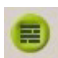
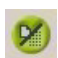




Online Help: Click to view the DPX 4 manual on-screen.

About Dotmanager: Opens a window displaying the current version of DotManager.

Buttons

Additionally, DotManager has the below seven buttons for accessing various parts of the setup, starting/stopping RipMate, starting the Hyperterminal, quitting DotManager, and saving changes (left to right):



DotManager buttons	
	view Platesetter tab
	view Setup tab
	view Rip Management tab
	start/stop the RipMate application
	start the Hyperterminal communication application
	exit the DotManager application
	save changes

Tabs

DotManager has a number of tabs accessing various functions as described below:

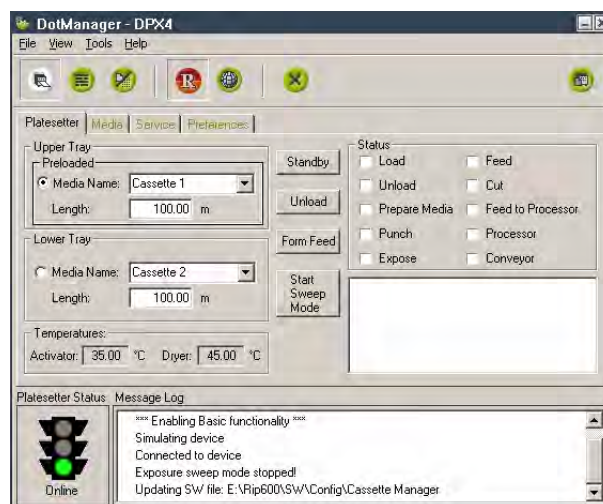
- Platesetter Tab
- Media Tab
- Service Tab
- Preferences Tab
- Setup Tab
- RipManagement Tab
 - License Tab

- Spool Tab
- Imagesetter Tab

Note In the following, all samples and screen views use metric measurement units. The measurement unit can be changed to imperial units on the Setup tab.

Platesetter Tab

The Platesetter tab is the direct link to and relates to the primary functions of the platesetter.



Upper and Lower Tray: The sections display the available media compartment(s). If your DPX 4 is not equipped with the extra optional compartment, the lower compartment will be greyed.

Preload/Unload: When a media roll has been inserted in the media compartment, click the **Preload** button to advance the media into the feed system. When the media is loaded, the button text changes to **Unload**, and the button is then used for pulling the media out of the feed system, e.g. in case of replacement.

Form Feed: Click the **Form Feed** button to advance the media 68 cm (maximum exposable film length).

Start/Stop Sweep Mode: Click this button to activate or deactivate the Exposure Sweep mode. The Exposure Sweep Mode provides for multiple RIP jobs to be exposed on one plate. DPX 4 automatically feeds the plate out, when it is full, or when the RIP does not supply new jobs within 15 seconds from the last completed job. See also Calibration in the RipMate Operator's Manual.

Activate/Standby: Click Standby to switch the platesetter to Standby (Energy Save) mode. The spinner will be switched off and the processor will be put in energy-save mode. See the Main\Preferences tab for the specific processor Standby settings.

Status: The Status section includes a number of status lamps for **Load, Unload, Prepare Media, Punch, Expose, Feed, Cut, Feed to Processor, Processor, and Conveyor** activities in the processor. Some signals from the lamps are accompanied by an additional message in the activity window below the lamps.

Temperatures: Displays the current temperatures of the Activator and Dryer.

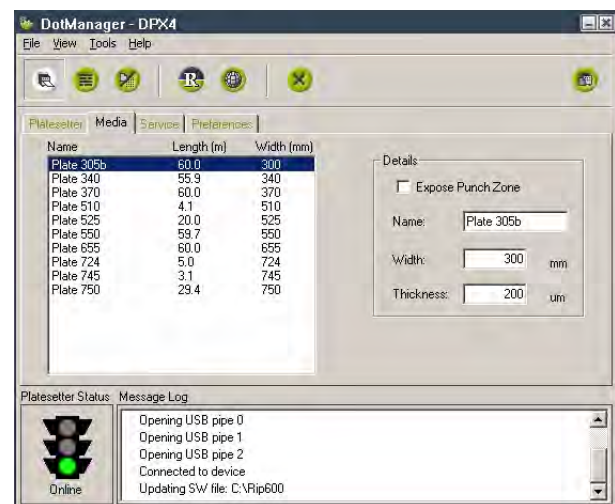
Platesetter Status: The traffic light indicates the current state of the platesetter at all times and responds to the colour indicators in the **Status** section.

- **Red:** Error
- **Orange:** Warning
- **Green:** OK

Message Log: The Message Log window next to the traffic light displays general messages relating to the data connection between the DotManager and DPX 4.

Media Tab

The Media window displays a list of cassettes with information about what media type is loaded in the cassette, length of remaining media, and media thickness.



It is possible to create new cassettes, and edit existing cassettes.

Media Drop Down list: Displays the list of media configured for the DPX 4. Maximum 16 different media can be configured.

Name: Enter a name for the new media as you want it to appear in the drop down list.

Width: Enter the width in millimetres of the new media.

Thickness: Enter the thickness in mm of the new media.

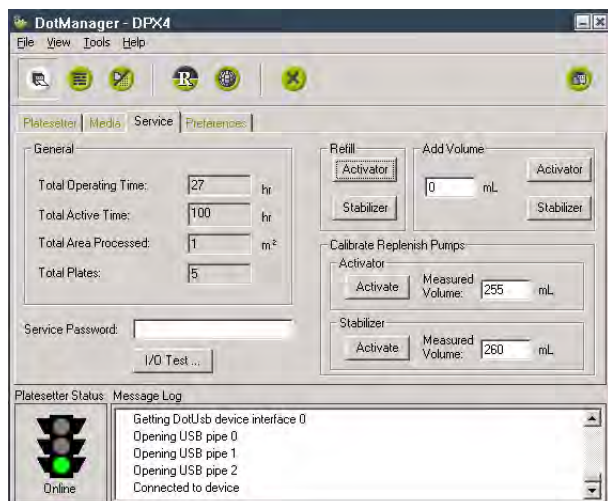
Expose Punch Zone: By clicking the check box you can choose to use the punch zone for exposure - however, the quality of exposure in this area cannot be guaranteed.

To change a media setup:

1. Select the correct media in the drop down list.
2. Change the appropriate settings.
3. Click the **Save** button.

Service Tab

The Service window displays some general info about the platesetter usage, tools to manage the activator- and stabilizer pumps.



The I/O test window is started from the Service window.

General

The General section displays some common statistics about the platesetter utilization. All these parameters are lifetime information of DPX 4.

Total Operating Time: Displays the total number of hours with power on.

Total Area processed: Displays the total number of hours activated (not counting standby time).

Total Black Area Processed: Displays the total number of square meters processed.

Total Plates: Displays the total number of plates processed.

Pump issues

Refill

Activator: Refill the activator rack until it is completely full.

Stabilizer: Refill the stabilizer rack until it is completely full.

Add Volume

Activator: Add the indicated volume to the activator rack.

Stabilizer: Add the indicated volume to the stabilizer rack.

I/O Test button

Opens the - service-password protected - I/O Test window.

This I/O Test window communicates with the relevant subsystems in the platesetter or processor and is meant for service personnel only.

Calibration of Replenishment Pumps

This adjustment ensures the replenish pumps are calibrated correctly, automatically replenishing the correct amount of activator and stabilizer during processing of the plates.

The pump calibration should be checked or carried out, if a pump has been replaced or if there is doubt about the automatic replenishing.

You need to have DotManager running and 1-litre measuring glass.

To calibrate the pumps:

1. Pull out the drawer with the chemistry.
2. Fill the measuring glass with at least 1 litre of activator and note the reading on the scale of the glass.
3. Remove the activator replenishment hose from its container and place it in the measuring glass.
4. Turn power on and enter the **DotManager** program.
5. Click on the **Main | Service tab**.
6. In the **Calibrate Replenish Pumps** section, click on **Activate** in the **Activator** section.

The replenishment pump now starts running for one minute and stops automatically.
7. On the scale on the measuring glass, read the amount in ml. of activator that has been pumped out of the glass and enter this amount in the **Measured Volume** field of the **Activator** section.
8. Click on the **Save to Device** button to store the changes in the DPX 4.

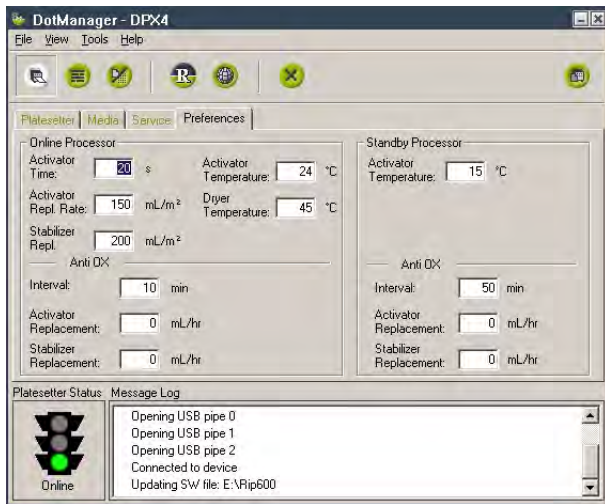
9. Now clean the measuring glass and fill with at least 1 litre of stabilizer and note the reading on the scale.
10. Remove the stabilizer replenishment hose from its container and place it in the measuring glass.
11. In the **Calibration** section, click on **Activate** in the **Stabilizer** section. The replenishment pump now starts running for one minute and stops automatically.
12. From the scale on the measuring glass, read the amount in ml. of **Stabilizer** that has been pumped out of the glass and enter this amount in the **Measured Volume** field of the **Stabilizer** section.
13. Click on the **Save to Device** button to store the changes in the DPX 4.
14. Reposition both chemistry hoses in their relevant containers and close the chemistry drawer.

Note Note: You should wear protective gloves and clothing during this operation.

CAUTION: Only authorized service personnel may override the interlock system. Turn off the power, before connecting or disconnecting cables before carrying out service operations.

Preferences Tab

The Preferences tab displays a number of values all of which are derived directly from DPX 4 processor.



Online Processor

Activator Time: Specifies the time (in seconds) the material is to be in the activator.

Activator Replenishment Rate: Specifies the volume of activator fluid that has to be replenished in millilitre per square meter of developed plate.

Stabilizer Replenishment Rate: Specifies the volume of stabilizer fluid that has to be replenished in millilitre per square meter of developed plate.

Dryer Temperature: Specifies the temperature of the dryer air in centigrades (°C).

Activator Temperature: Specifies the temperature of the activator fluid in centigrades (°C).

Anti Oxidant

Interval: Specifies the interval in minutes in which the fluid has to be replenished to avoid oxidation.

Activator Replacement: Specifies the volume of activator fluid that has to be replenished in millilitre per hour.

Stabilizer Replacement: Specifies the volume of stabilizer fluid that has to be replenished in millilitre per hour.

Standby (Energy Save mode) Processor

Activator Temperature: Specifies the temperature of the activator fluid in centigrades (°C).

Standby (Energy Save mode) Anti Oxidant

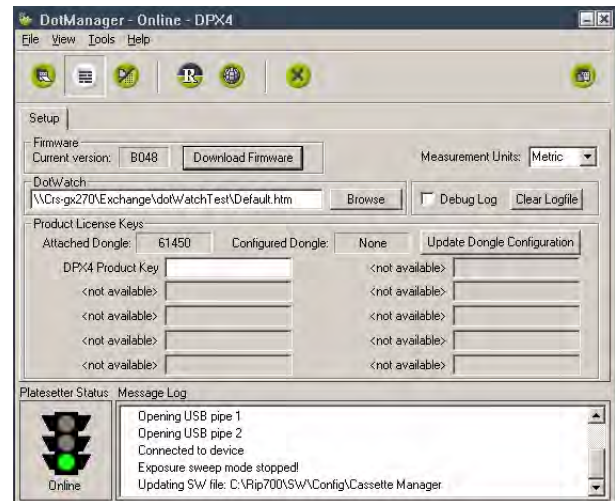
Interval: Specifies the interval in minutes in which the fluid has to be replenished to avoid oxidation.

Activator Replacement: Specifies the volume of activator fluid that has to be replenished in millilitre per hour.

Stabilizer Replacement: Specifies the volume of stabilizer fluid that has to be replenished in millilitre per hour.

Setup Tab

The Setup Window displays a series of DPX 4 related settings.



Firmware

Current Firmware version: Displays the current firmware version in the DPX 4.

Download Firmware: Use this button to download or update the DPX 4 firmware to your platesetter. The program will guide you through the download process. (To update your DPX 4 firmware, first shut down RipMate.)

Measurement Units: Click to open and choose between Metric and Imperial units.

Clear log: Click the button to delete the dotmanager.log-file.

Debug Log: Enable/disable a debug log: When debugging is enabled, DotManager will record all information about the communication with the platesetter and processor into a plain textfile. This file can be consulted at \Ripxxx\DotManager.log.

DotWatch

DotManager updates the DotWatch **Default.htm** file with information on the developer and media status of the DPX 4. Normally, you do not need to browse for the location of the Default.htm file, but if you move the Default.htm file to, for example, an internet information server that is accessible from the internet, you will need to browse for the new location to let DotManager update the file.

The browser-based DotWatch program lets you monitor the activities of the DPX 4 from any workstation in your network. For more information on DotWatch consult the *RipMate Workstation User's Guide*.

Product LicenseKeys

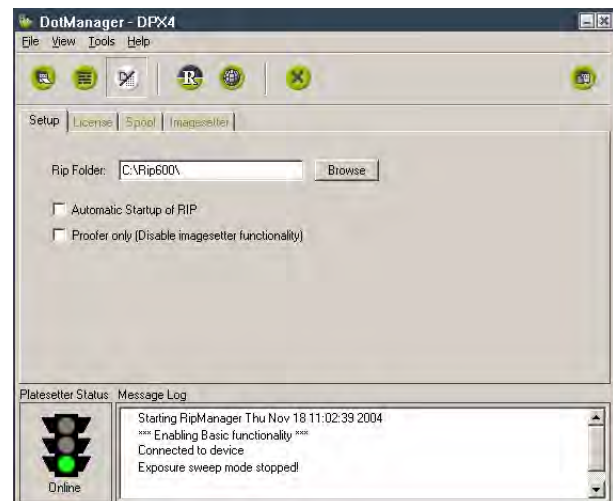
Attached Dongle: Serial number of the USB dongle plugged in the RIP PC.

Configured Dongle: Serial number of the USB dongle which is configured in the DPX 4 firmware.

License Keys input fields: Enter the appropriate license key to activate certain extra (license protected) platesetter functions.

Update Dongle Configuration: After entering the license key(s) click the Update Dongle Configuration button to save the new license(s) in the DPX 4 firmware.

RipManagement Tab



Rip Folder: DotManager needs to be able to find RipMate on your hard disk, so that it can send instructions and launch RipMate when it needs to. If you move RipMate to a new folder, you must enter the new path in the Rip Folder directory field by either typing it directly or using the **Browse** button to find it.

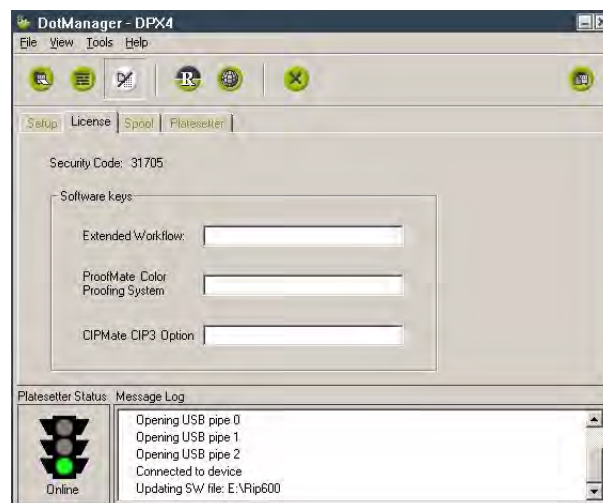
Automatic startup of RIP: DotManager must run before RipMate. This enables DotManager to establish communication with RipMate and to control the media management features. Therefore, when you want to start running RipMate, you must begin by running DotManager. For convenience, DotManager can start RipMate automatically thereafter. To activate this feature, mark the **Automatic Startup of RIP** check box.

Proofer only (disable platesetter functionality): Disables the platesetter-only features of RipMate so that you can use it simply to drive a proof printer. If you are using RipMate only to drive a proof printer (possibly using the ProofMate option), then you should mark this check box to prevent RipMate from generating an error message when it does not find a platesetter attached to your computer.

The RipManagement tab displays the additional sub-tabs:

- [License Tab](#)
- [Spool Tab](#)
- [Imagesetter Tab](#)

License Tab



The License tab enables the Esko-Graphics specific RipMate options by entering the appropriate password.

These options are:

Extended Workflow: The Extended Workflow option provides several enhancements that make working with RipMate more efficient and provides extra support for larger, multi-user installations. It adds a dedicated input plug-in and extra proofing facilities.

ProofMate: The ProofMate proofing option lets you use any low- or high-end printer or plotter as a proofing device. The only thing you need is a standard Windows printer driver. With ProofMate, any of thousands of printers can be used for proofing at the cost of just one printer driver.

ProofMate allows simultaneous output to a proofer and to any other output device, such as an platesetter. While you are sending one job to the proofer, you can be sending another job to the platesetter, thus greatly improving your output

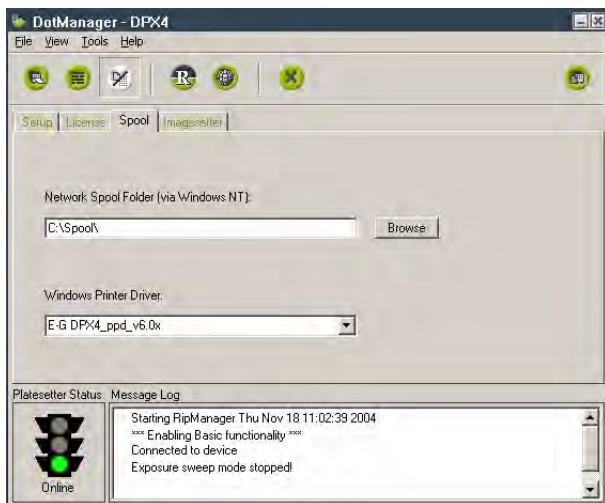
productivity. ProofMate makes use of industry-standard ICC profiles to provide precise color reproduction and final press color emulation.

CIPMate: CIP3 files are used to link printing and post-printing processes closer to the prepress phase. With the CIPMate option, RipMate generates CIP3 files on the fly as the platesetter is driven, using exactly the same screened data.

This means that the PostScript job only has to be processed once, compared with systems that use a separate output driver for CIP3. Thus, only half as much time is required, and the cost and inconvenience of maintaining a duplicate CIP3 setup for each platesetter setup is avoided.

Spool Tab

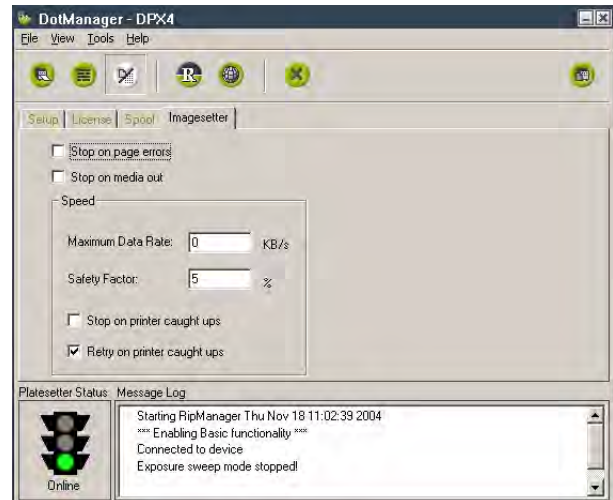
The Spool tab displays information about spooler settings.



Network Spool Folder: Enter the complete path for the folder to use for spooling, or use the **Browse**-button for locating the folder.

Windows Printer Driver: Click to open the drop-down list box and select the appropriate Windows printer driver installed on the RIP PC.

Imagesetter Tab



Stop on page errors: This check box determines how RipMate will react to a page that contains errors, such as incorrect margins or corruption. If this check box is marked, all further output will be disabled from RipMate until it is explicitly re-enabled via the check box in the RipMate Output Controller/Monitor window.

If this check box is unmarked, all pages with errors will be moved to the **Held Queue** in the RipMate Output Controller/Monitor window. Other jobs will continue to print.

Stop on media out: This check box applies only to platesetters that have more than one input cassette (like the DotMate 5000). It controls what RipMate will do if one of the cassettes runs out of media.

If this check box is marked, all further output will be disabled from Rip-Mate until the cassette is refilled and output is explicitly re-enabled via the check box in the RipMate Output Controller/Monitor window.

If this check box is unmarked, RipMate will move all jobs requesting out-put to the empty cassette into the **Held Queue**. However, if the Smart Cassette check box is marked, RipMate will output to the other cassette, provided it contains the correct media. Jobs requesting the other cassette will be processed as usual.

Maximum Data Rate: The first time you run RipMate, this field will be set to zero. RipMate will then test your system to find out how fast data can be sent to the platesetter. If you are having frequent problems with pages caught ups, you may need to set this field back to zero so that RipMate can recalculate a reasonable rate. Otherwise, you should never change the value of this field.

Safety Factor: The safety factor forces RipMate to assume communication will be slightly slower than the value found for **Maximum Data Rate**. A safety factor of 5% should be sufficient, but if recalculating the **Maximum Data Rate**, as suggested above, does not help reduce page caught ups, try to raise this value slightly.

Stop on printer caught ups: When the RIP is unable to provide the platesetter with data at the correct speed (due, for example, to excessive loads on the processor or network), the output will be interrupted. In this case, the platesetter must stop output.

This check box determines what RipMate will do in the event of a caught up.

If this check box is marked, and the **Retry on printer caught ups** check box is unmarked, RipMate will disable all further output each time a caught up occurs. Output will remain disabled, until it is re-enabled in RipMate's Output Controller/Monitor window.

If this check box is marked, and the **Retry on printer caught ups** check box is also marked, RipMate will try to resend the page at half speed. If it catches up again, RipMate will try at one quarter speed. If it catches yet again, RipMate disables all further output.

If this check box is unmarked, and the **Retry on printer caught ups** check box is unmarked, RipMate will move the job into the **Held Queue**. Other jobs will print as usual.

If this check box is unmarked, and the **Retry on printer caught ups** check box is marked, RipMate will retry at the two slower speeds, but if output is still not possible, the job will be moved into the **Held Queue**. Other jobs will print as usual.

Retry on printer caught ups: This check box controls whether or not RipMate will try to output at a slower speed, if a caught up occurs at the usual speed. See the description for **Stop on printer caught ups** above for more information.

Chapter 6 – Maintenance

General

It is vital for maintaining a high quality output that DPX 4 is kept clean at all times. As the media passes through chemistry, it inevitably leaves some residue on the rollers in the processor rack - thus:

- any part of the processor unit which is passed by the media should be cleaned at least once a week, or at regular intervals
- the processor should be cleaned at each change of chemistry
- the punch waste container located behind the left-hand side door should be emptied at regular intervals. The transparent part of the container can be unscrewed by turning it counter-clockwise.
- any chemical residue on the drain hose and hose coupling should be removed.

Cleaning DPX 4 is covered below.

In this section:

- [Draining the Processor Unit](#)
- [Cleaning the Processor Unit](#)
- [Filling the Processor Unit](#)

Draining the Processor Unit

Draining the processor is relevant whenever you wish to clean the processor rack, or replace chemistry and is done in two steps, as the waste tank should be empty before draining the processor for chemistry.

- *Step 1: Draining the waste tank*
- *Step 2: Emptying the processor*

Step 1: Draining the waste tank

1. Press to open the cover.

Press the cover to open it



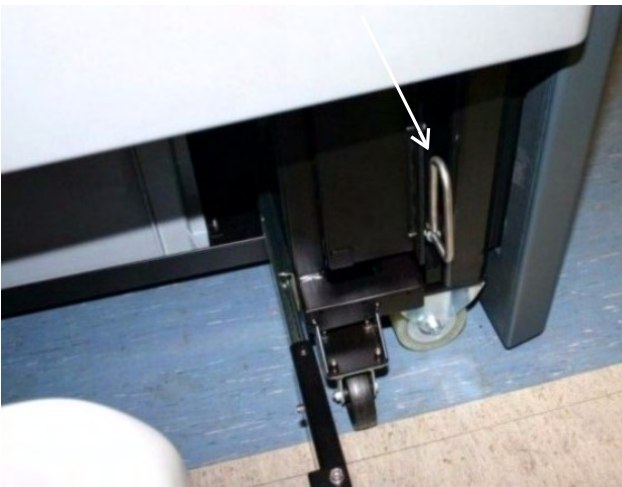
2. After opening the cover you can access the processor lock handle, which is positioned horizontally, when locked.

Lock handle in horizontal and locked position



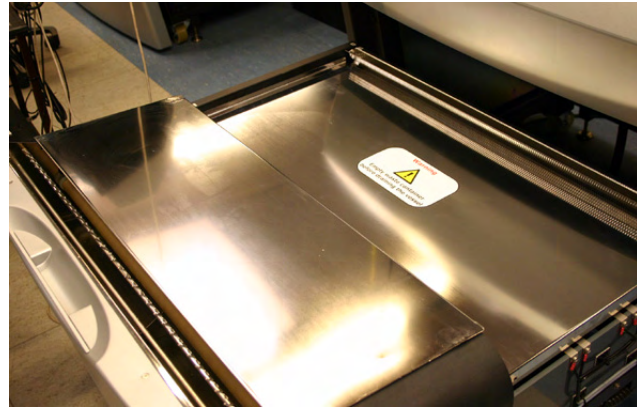
3. To unlock the processor, turn the lock handle to vertical position.

Lock handle in vertical and open position



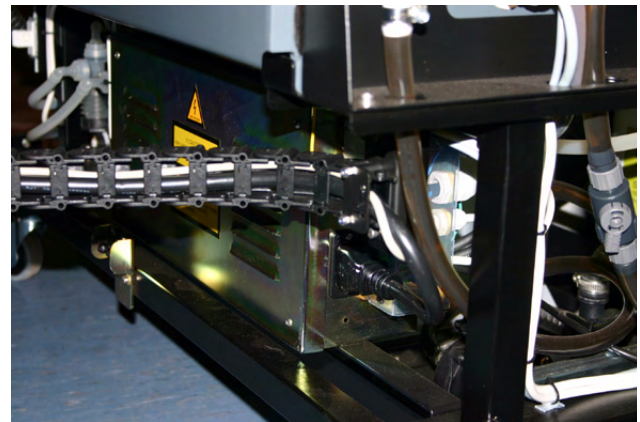
4. Pull out the processor unit as far as permitted by the cable chain - carefully to avoid spilling the fluids.

Pulled out processor unit



Note The processor unit is supported by rails while in position and by wheels when pulled out.

Cable chain



5. Push the drain hose onto the outlet, until it locks.

Drain hose



6. Press the green switch, which starts the Waste Pump, and leave it until the tank is empty.

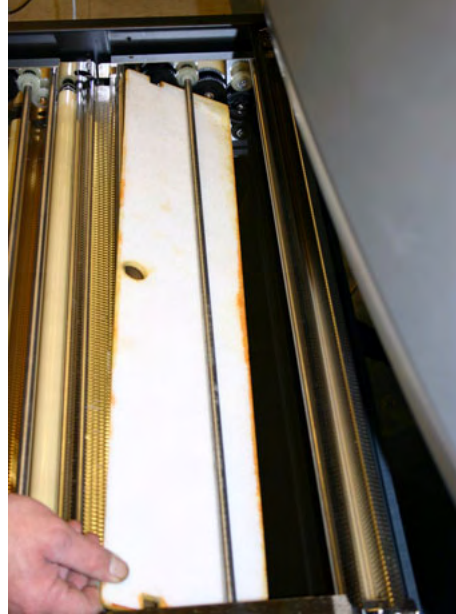
Green switch



Step 2: Emptying the processor

1. Remove the white floating cover.

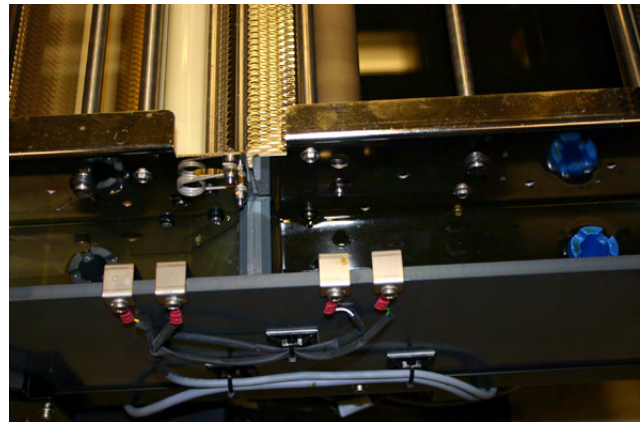
Floating cover



2. Unscrew the drain pipes and leave the chemicals to flow into the waste tank.

Note The empty tanks should be cleaned prior to re-filling.

Empty tanks and clean prior to re-filling

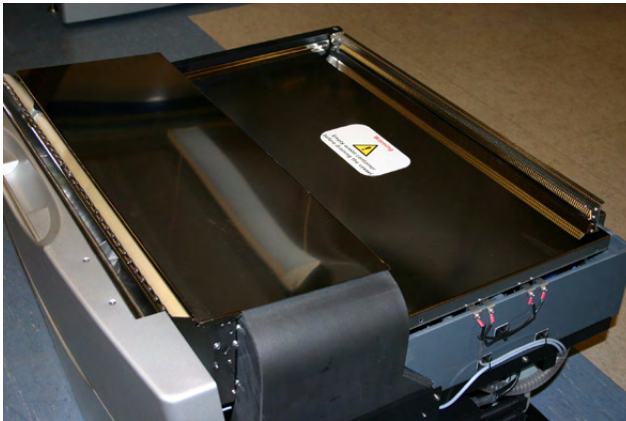


Cleaning the Processor Unit

The processor unit should be cleaned every time the chemistry is changed. First, the processor unit must be drained (see [Draining the Processor Unit](#)).

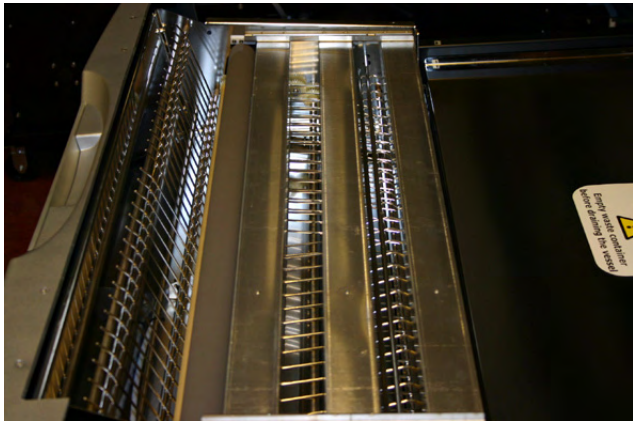
1. Lift off the tank covers.

Tank covers



2. Lift off the air ducts and media guides in the dryer section.

Dryer section: Lift off air ducts and media guides



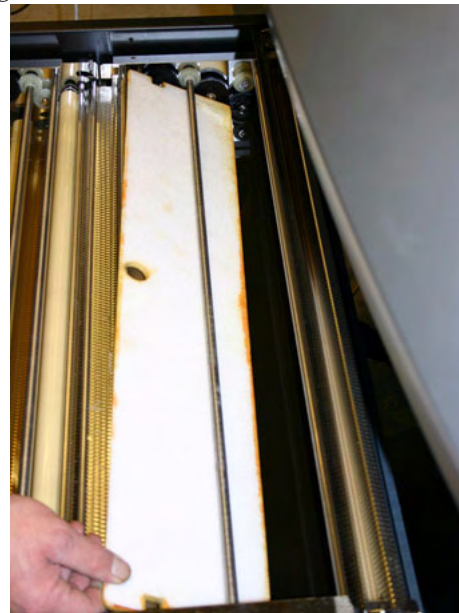
3. Lift off the media guide on the processor section.

Processor section: Lift off media guide



4. Lift off the white floating cover.

Floating cover



5. Lift off the processor rack from the displayed side and clean it with a soft brush and lukewarm water.

Processor rack



6. Clean the activator and stabilizer tanks by pouring clean water into the tanks, cleaning with Ph-neutral soap and a soft brush and finish with clean water.
7. Let the water run off the rack before putting it back in position.
8. Finish by draining the cleaning water from the waste tank.

Note Make sure that any chemical residue on the drain hose and hose coupling is removed.

Filling the Processor Unit

1. Press to open the cover.

Press the cover to open it



2. After opening the cover you can access the processor lock handle, which is positioned horizontally, when locked.

Lock handle in horizontal and locked position



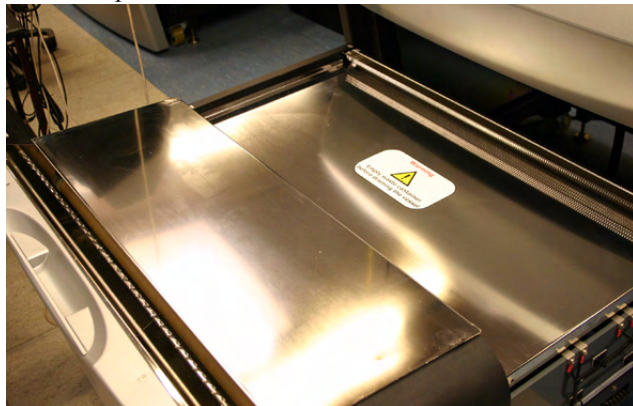
3. To unlock the processor, turn the lock handle to vertical position.

Lock handle in vertical and open position

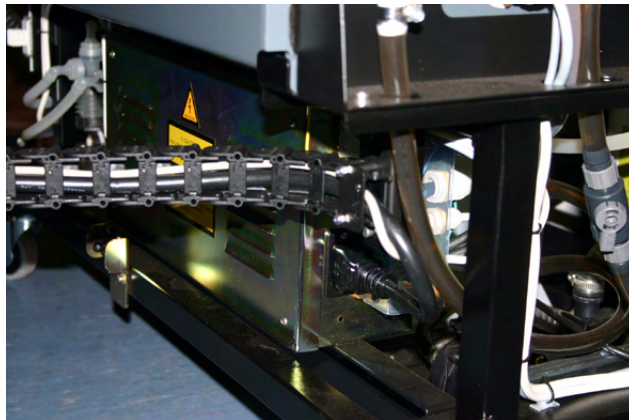


4. Pull out the processor unit as far as permitted by the cable chain - carefully to avoid spilling the fluids.

Pulled out processor unit



Cable chain



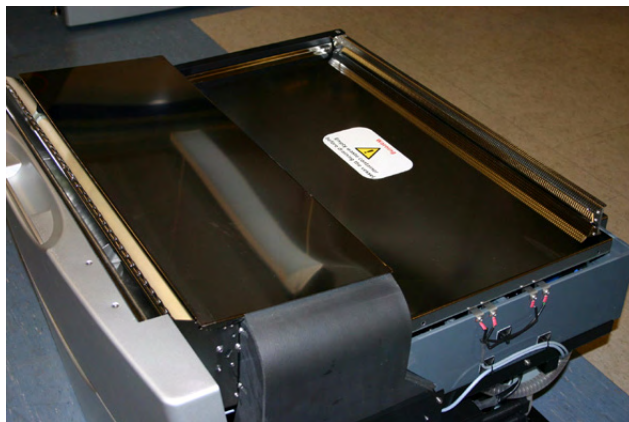
Note The processor unit is supported by rails while in position and by wheels when pulled out.

5. Lift off the tank covers.

Make sure the drain pipes are in position.

IMPORTANT: Avoid any splashing into the Activator tank, as even small amounts of stabilizer may damage the activator.

Tank covers



6. Add new chemicals - 15 litres of Activator and 7.5 litres of Stabilizer.

Note New chemicals should be mixed in a separate container before adding it to the developer.

7. Put the cover back on.
8. Gently push the processor unit back into position.
9. Turn the processor lock handle to horizontal position to lock the processor.

The activator temperature is regulated by means of a computer-controlled heating element and must be between 20° C (68°F) and 30°C (86°F).

WARNING: Never turn on the power unless the processor unit is filled or the power plug for the heating element is removed, as this may cause overheating and damage to the processor unit.

Chapter 7 – Calibration

Why Is Calibration Necessary?

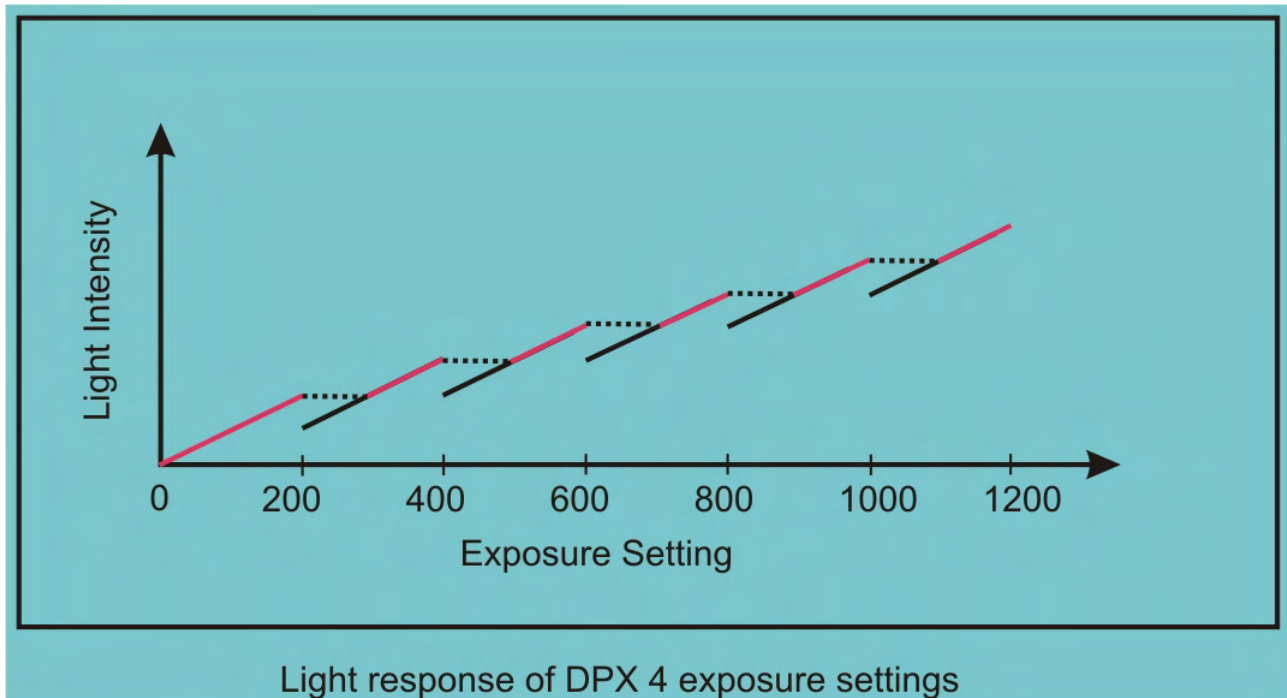
In order to compensate for dot gain and produce consistent output, a platesetter must be calibrated for linearity. An platesetter is "linear" when every tone specified in the input gives that same tone in the output, so that the curve comparing input and output is a straight line.

In four-color work, even small deviations from a linear curve can cause significant errors in the colors produced - for example, changes in color balance and contrast, loss of brightness, and loss of highlight or shadow detail. Even if the platesetter is very accurate, the output will still be affected by

the type and brand of media used, so its calibration should be regularly checked.

As a result of the way DPX 4 moderates its exposures, it is recommended that you sweep from 200 to 1200 at steps of 200. As illustrated below, the light intensity response is notched at intervals of 200, and to achieve optimum dynamic range you should use a setting near the top of one of the notches. By creating a sweep in steps of 200 that starts at 200, you will be testing at the top of each notch.

Calibration is described in the *RipMate User Manual*.



Chapter 8 – Technical Specifications

In this section:

- Platesetter specifications
- Media specifications
- Processor specifications

PLATESETTER SPECIFICATIONS	
Exposure technology	Internal drum
Max plate format	680 x 750 mm
Min plate format	305 x 305 mm
Optional Standard punches	Bacher 220 mm. Plate punch Bacher 425 mm. Plate punch Bacher 220/425 mm. Plate punch The gripper margin will be imageable
Custom punch	Punch is in one side of the plate only
Laser type	Red laser diode, 658 nm., min.10 mW
Resolution	1200 - 3000 dpi in steps of 1
Spinner speed	60.000 RPM
Performance	Approximately 28 full format plates pr. hour @2540 dpi
Integrated processor	2-bath Polyester plate processor with replenish control Integrated dryer section
Replenish capacity	min. 2 full size rolls of material
Waste capacity	Min. bath contents + full replenish capacity
Physical dimensions HxWxD	App. 1.100 x 1.300 x 1.050 mm
Weight	App. 500 kg
RIP Interface	USB 2.0

User Interface	DotManager software on the RIP PC
Power Requirements	210 -240 Volt, 50/60 Hz, 16 A
Working Environment	40 - 70% RH, non-condensing
Temperature	18 - 25 degrees C
Max temperature change	2 degrees C/hour
Installation requirements	80 cm wide door
MEDIA SPECIFICATIONS	
Media	2 media rolls (2 is optional)
Media Type	DotPrint/ Mitsubishi Silver Digiplate, with polyester base material
Thickness	0.2 mm/8 mill FR/FRM on media widths from 305 - 750 mm
Core Size	6"/152.4 mm
Media width, large	305 - 750 mm
Media width, medium	305 - 550 mm
Output Tray Capacity	40 maximum format plates 0.2 mm media
PROCESSOR SPECIFICATIONS	
Tank Capacity Activator	App. 15 litres
Tank Capacity Stabilizer	App. 7.50 litres
Replenishment pump, Activator	150 ml/m ² , SLM-AC: Water = 1:1
Replenishment pump, Stabilizer	200 ml/m ² SLM-ST : Water = 1:3
Circulation	Mechanical stirring for activator only
Heater for Chemicals	Heating element, only activator 750 Watts
Working temperature, activator	28-30°C
Heating time	18°C to 28° C max. 20 min

Replenishment container	2 x 10 litres
Drain system	Overflowed chemicals to waste container, 30 litres
Pump to empty drain tank	10 litres/min
Dip to nip distance, Activator	App. 390 mm
Dip to nip distance, Stabilizer	App. 200 mm
Plate advance speed	15,6 mm/sec. (At 25 sec. development time)
Processing performance for 505 mm plate	65 plates/hour
Drying System Heaters	2.000 Watts
Temperature range settings	30°C - 50° C drying system

Index

A

- Acrobat Reader 1.2
 - bookmarks 1.3
 - printing this guide 1.3
 - using hot links 1.3

B

- Browser-based Help 1.1
 - contents, index and search 1.1
 - printing a page 1.2

D

- DotManager program 5.1
- DotWatch 5.8
- DPX 4 2.1, 7.1
 - calibrating 7.1
 - integrated processor and dryer 2.2
 - internal drum design 2.1
 - knife and punch system 2.2
 - laser and spinner system 2.2
 - media load system 2.1
 - optical system 2.2
 - workflow 2.3

F

- File menu 5.2

H

- Help menu 5.2

I

- Imagesetter Tab 5.10

L

- Laser 3.1
- License Tab 5.9

M

- Maintenance
 - cleaning DPX 4 6.1
- Media
 - inserting 4.1
 - mounting 4.1
- Media Roll
 - mounting new 4.3
 - removing 4.1
- Media Tab 5.4
 - change media setup 5.5

N

- Notes 1.4

P

- Platesetter Tab 5.3
 - activate/standby 5.4
 - form feed 5.4
 - message log 5.4
 - platesetter status 5.4
 - preload/unload 5.3

- start/stop Sweep Mode 5.4
- status 5.4
- temperatures 5.4
- upper and lower tray 5.3

Preferences Tab 5.6

Processor 6.1

- cleaning 6.4
- draining 6.1
- emptying 6.3
- filling 6.5

R

RipManagement Tab 5.8

- Imagesetter Tab 5.10

- Licence Tab 5.9

- Spool Tab 5.10

RipManager 5.1

RipMate options 5.9

- CIPMate 5.10

- Extended Workflow 5.9

- ProofMate 5.9

S

Safety 3.1

- Laser 3.1

Service Tab 5.5

- calibrate replenishment pumps 5.6

- online processor 5.7

- pump issues 5.5

Setup Tab 5.7

Spool Tab 5.10

T

Tools menu 5.2

- start hyperterminal 5.2

- start RipMate 5.2

- stop Ripmate 5.2

V

View menu 5.2

W

Warnings 1.4

Waste tank

- draining 6.1